

PROVIDENCE, R. I.
CITY ENGINEER'S OFFICE
STREET LINE DEPT.

Nov. 28, 1888

014516

Providence, R.I.
This map accompanies
our report of this date.

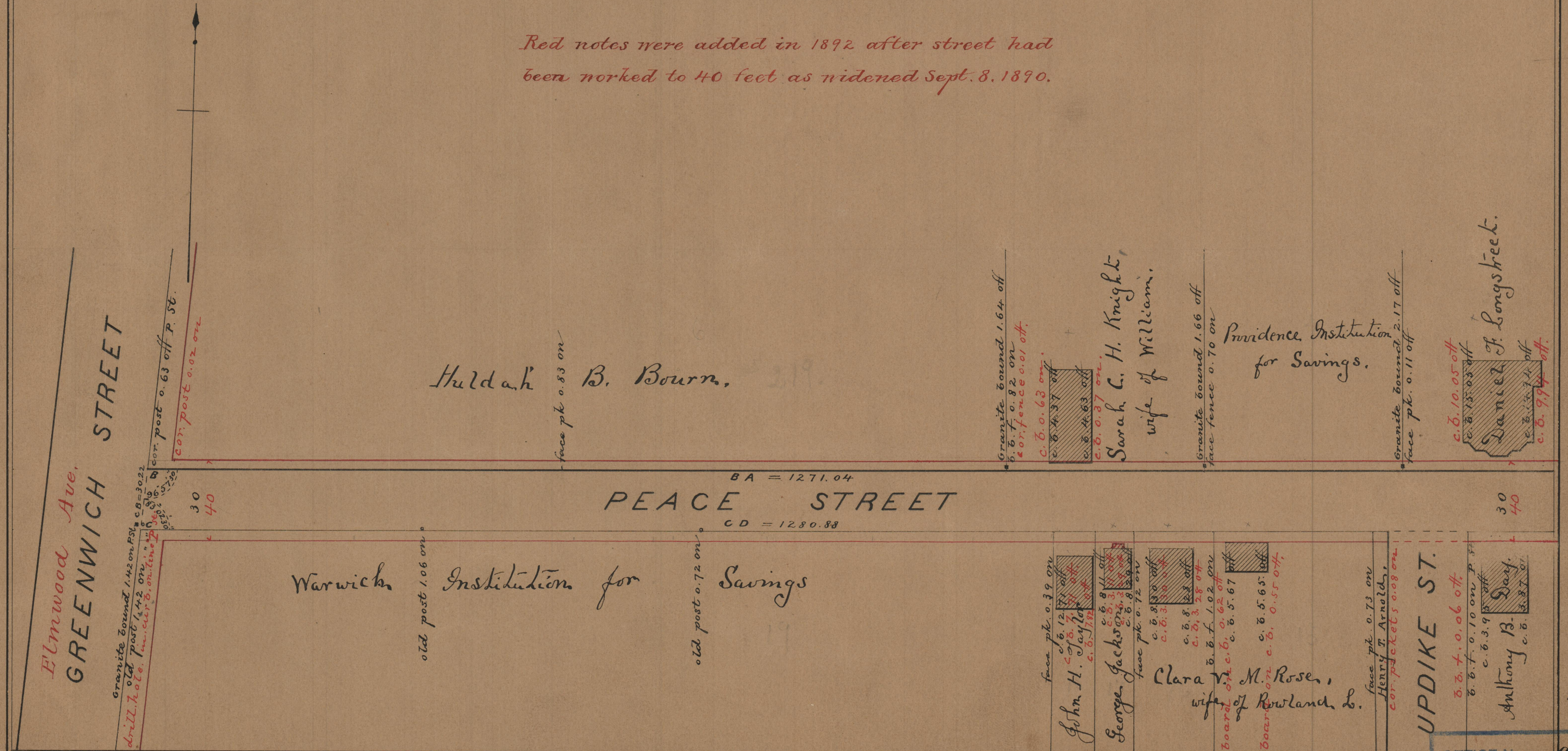
PLAT OF PEACE STREET

FROM BROAD ST. TO GREENWICH ST.

IN TWO SHEETS.

SCALE 50 FEET PER INCH.

*Red notes were added in 1892 after street had
been worked to 40 feet as widened Sept. 8, 1890.*



UPDIKE ST.

83
B-47

OFFICE No. 9892
DRAWER " 83
SHEET " B-47